

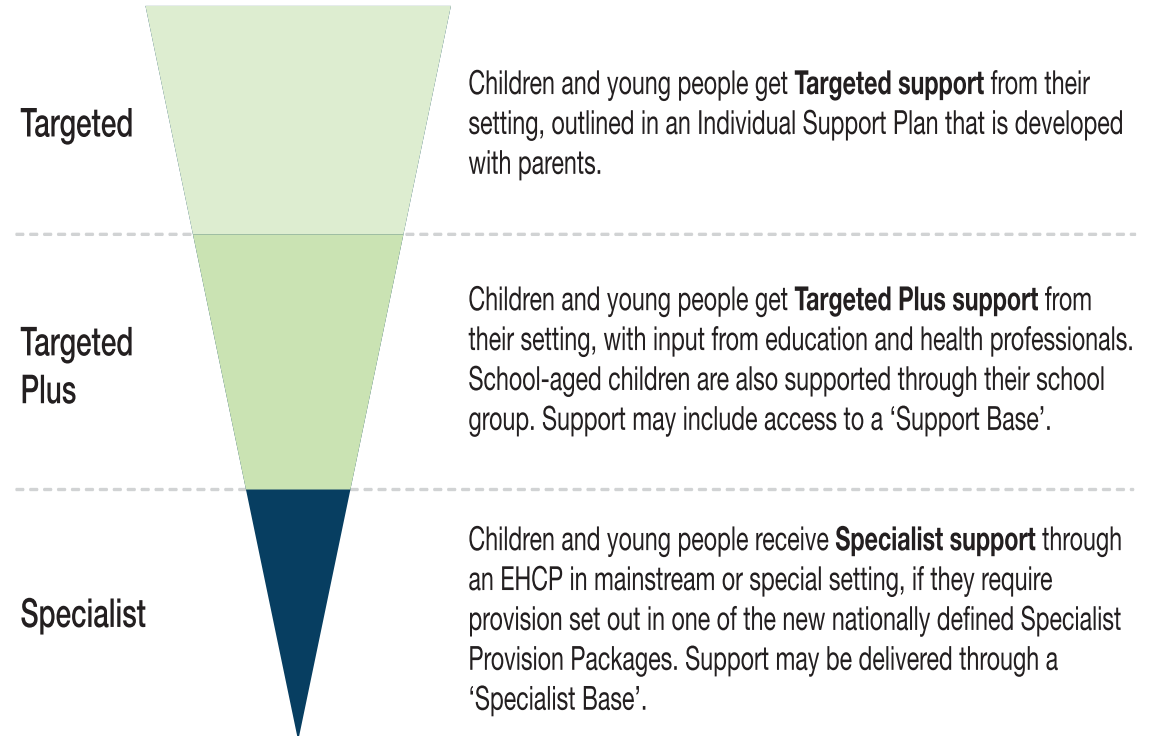
Schools White Paper: Every Child Achieving and Thriving

SEND Reforms



Inclusion and SEND reform

- Inclusive Mainstream Fund of £1.6 billion over 3 years to ensure needs are identified early and met consistently
- Statutory duty for education settings to record and monitor SEN and provision in an Individual Support Plan (ISP).
- £1.8 billion Experts at Hand multi-agency support
- Specialist Provision Packages to shape future EHCPs
- £3.7bn expansion of special & inclusion base places



We are investing heavily in the system so that children receive timely and appropriate support

We will invest an additional £4bn in reforms between 2026-27 to 2028-29 and £3.7bn in Capital (2025-26 to 2029-30)

Inclusive Mainstream Fund - £1.6bn

For to schools, colleges and early years settings, to spend on targeted support for children with additional needs, such as small group support for literacy or numeracy.

National training for all EY, School and Post-16 staff – over £200m

To ensure that all staff get new training to support children with SEND.

Experts at Hand - £1.8bn

For LA and health services to give EY settings, mainstream schools and colleges direct access to expert support - 40 days per average primary school and 160 days per average secondary school.

Education Psychologists and Speech and Language Therapists - over £40m

To fund training for over 200 more educational psychologists per year from 2026 and 2027 and ensure there is a SaLT advanced practitioner in every Integrated Care Board (ICB) area.

Support for local areas to deliver the new system - £200m

To transform local SEND services and build a cohesive, child-focused, inclusive system. This funding will strengthen LAs' strategic planning, commissioning, leadership capacity and engagement with the education sector.

Best Start in Life Family Hubs – over £200m

For every Best Start Family Hub to enable each hub to have a SEND practitioner to offer direct support to children and families.

High Needs Capital - £3.7 billion

To create 60,000 new specialist places, including tens of thousands of places in inclusion bases and new special school places.

Three layers of support to deliver better outcomes for all children

Children & young people

The new offer

Child's experience

All children

Universal

- Newly trained, upskilled teachers
- First of kind National Inclusion Standards

Children who require some additional support from their setting, e.g. personalised materials, outlined in an Individual Support Plan

Layers of support

Targeted

- High quality support, on demand, in mainstream:
- Individual Support Plans
 - Support for transitions

Children who require additional support from their setting, with input from education and health care professionals, e.g. a speech and language therapist.

Targeted Plus

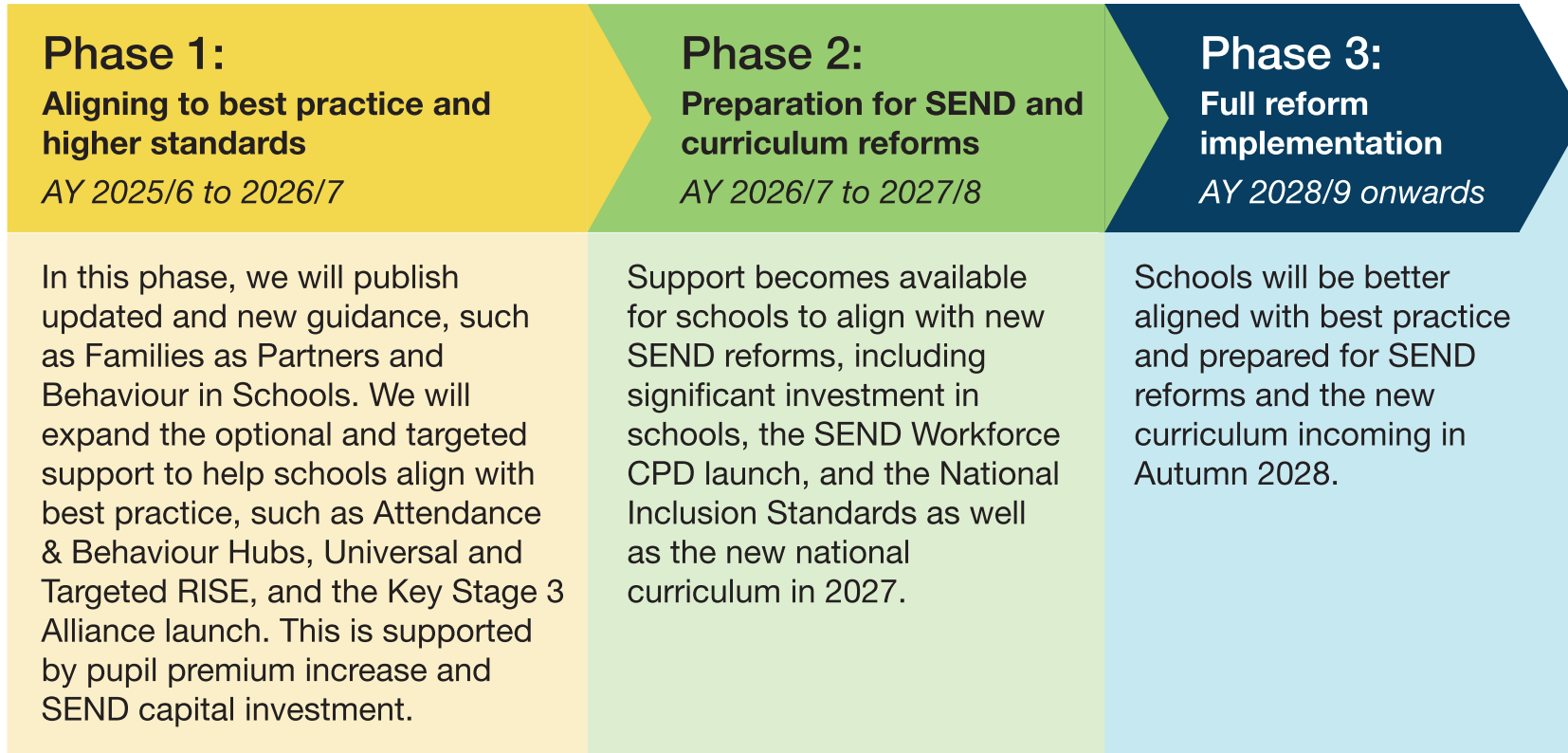
- Improved access to external expertise:
- Inclusion Bases
 - Experts at Hand and outreach from AP and specialist settings

Children with the most complex needs, which cannot be met in the mainstream classroom

Specialist

- Specialist provision packages
- EHCPs (in mainstream & specialist schools)
- Specialist bases
- Special school places

Implementation Phases



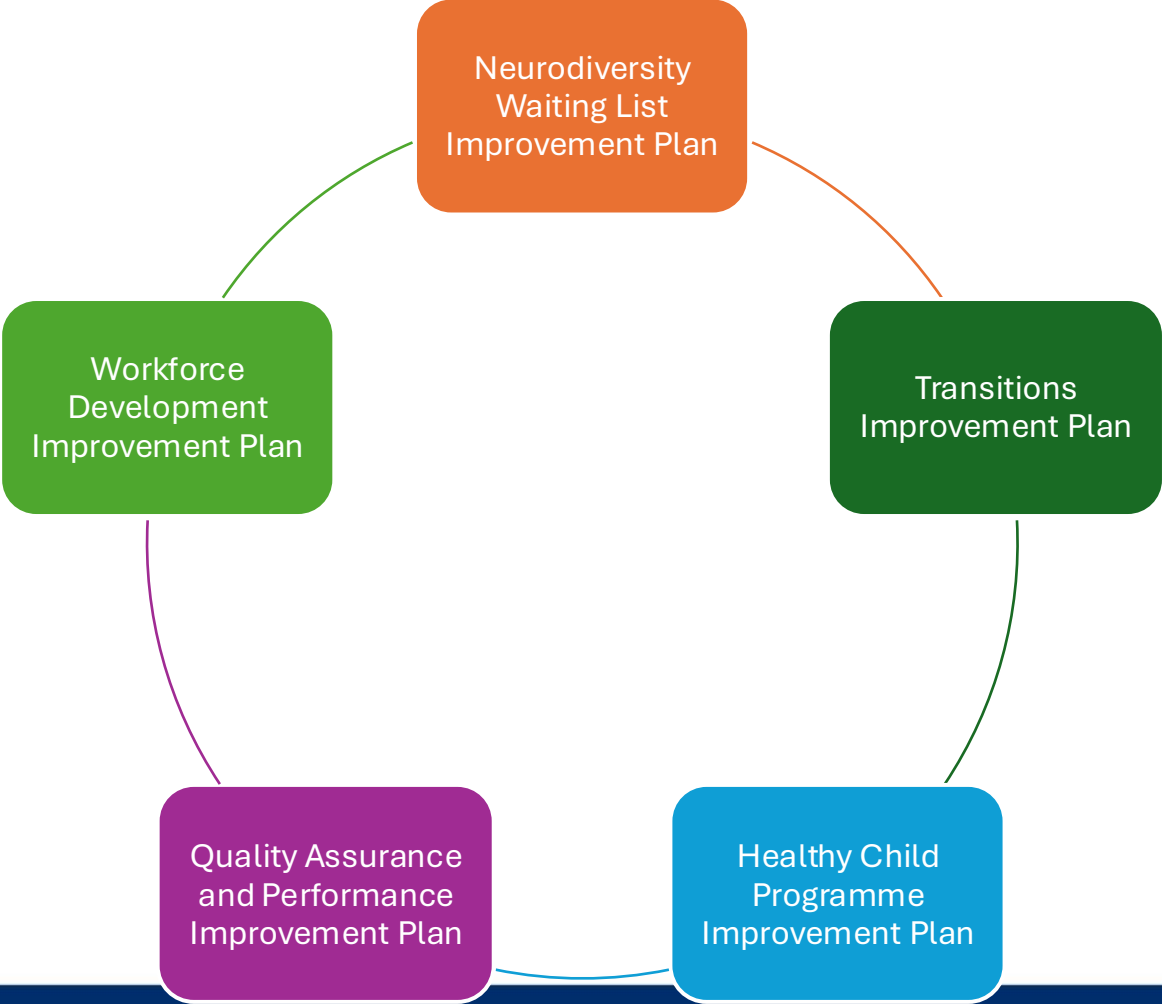
Southampton Local Area Reform Plan – Next Steps

Completion of SEND Reform Plan,
comprising of:

- SEND Reform Action Plan
- Local Partnership Maturity Assessment
- SEND Reform Data and Finance Spreadsheet
- Expert at Hands Proposal

*Submission to DFE by 19th June 2026 (DFE
SEND Advisors by 15th May)*

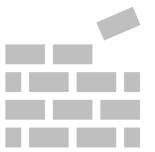
Where we are starting from - Southampton SEND Post Inspection Improvement Plan



Findings from the May 2024 Ofsted Local Area inspection led to the Post Inspection improvement plan, with 5 key areas of focus:

The Improvement Plan can be found on the Local Offer website:
[Appendix – Appendix – 2024 SEND post-inspection improvement plan](#)

Southampton SEND – Starting position



SEND Capita Programme -

176 new special school places by 2026

Strong focus on developing specialist resourced provisions (SRPs) within mainstream schools

Special School Funding Rebranding

New banding framework fully implemented across Southampton special schools, providing a transparent, consistent funding model aligned to assessed need.

Education Redesign

SEND and Education brought together through Education Redesign under oversight of new Director of Education

SEND Portal

Introduction of digital EHCP portal to support with statutory SEND processes

SEND Mainstream Funding Cluster Model -

All mainstream school age setting opted in to the process for start of the 2025-2026 Academic Year

Post 16 Planning

Collaborative work with Post 16 leaders to consider Post 16 placement. Development of additional Post 16 resource provision and new entry level course.

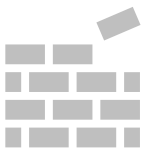
Therapy services

Have worked hard to reduce waiting times - 52 week waits for therapies eliminated, with 81% seen within 18 weeks.

Health Visiting -

8% increase in uptake of 1yr Health Review and 6.5% for 2yr Health Review to Oct 2025.

Southampton SEND – Starting position



ND Multi-Disciplinary Team -

Development of ND MDT to support with the transformation of the ND Pathway

Invision 360

Quality Assurance Framework to improve EHCP and Annual Review processes. Recently purchased

Parent Carer Forum (PCF)

Strengthening relationships with the PCF and increased investment in activity

Delivering Better Value for SEND initiatives

- SEMH workstreams
- Autism in Schools
- ND Parenting Programmes
- Inclusive Education Audit

SALT services

Established SALSA team. Recently appointed SALT within ND MDT. Early Years SALT support.

Southampton Inclusion Partnership (SIP)

10 year + relationship with SIP operating out of special school within the city. Delivering training, guidance, and direct outreach packages

Universal Sensory Support

Online universal sensory support for professionals developed, including online checklist, sensory passport and strategy guide

AI Drafting tool

Use of Invision VITA 360 AI EHCP drafting tool to , improve consistency and quality, and free specialist staff to focus on professional judgement and family engagement

Portage service

Investment in Portage service to support families with young people with SEND pre-school age.

Reflections on Starting Position

From your perspective, how do these examples of progress match your own experiences of the SEND system?

Where do you feel there are opportunities to strengthen or build on this progress to better meet families' needs?

Which of these developments feel most meaningful or noticeable for you and your child, and why?

What would you most like to see developed next to make a positive difference for you and your child?

Current draft Southampton Local Area Reform Plan



Understanding the SEND Reforms

Building a better future, together.



The SEND reforms are all about making sure children and young people with Special Educational Needs and Disabilities (SEND) get the right support, at the right time, in the right way.

Over the next three years, the local area partnership will focus on three overarching goals:

1 Improve long-term life opportunities for children and young people with SEND



Identify needs early
More children get the right support early through strong SEN Support.



Stabilise EHCP growth
EHCP growth slows and is stabilised at no more than 8% by 2027/28.



Fair access to support
Experts at Hand supports all settings fairly, using data and feedback.



Use resources well
Fewer escalations mean children get the right support sooner and spend is sustainable.



2 Increase confidence and trust in the SEND system



Listen and involve
Families feel listened to and involved, with clear communication.



Timely, joined-up advice
High-quality advice from education, health and care at key moments.



Clear information
A simple local offer and clear pathways so families know what to expect.



Stronger relationships
Work together as one system so families have confidence help will be there.



3 Build a SEND system that is sustainable and reliable



Strengthen services
Use local resources wisely so support is there now and for the future.



Reduce reliance on high-cost placements
Invest in local provision and inclusive mainstream support.



Develop our workforce
Skilled, confident staff with the right training and support.



Strong leadership and governance
Decisions based on data and learning, with clear accountability.



8 key workstreams to deliver the reforms



1. Experts at Hand Model

Local experts support early help in every setting.



2. SEND Mainstream Funding Cluster Model

Fair funding for mainstream to strengthen inclusion.



3. Specialist inclusion base capita program

More specialist bases in schools to increase local support.



4. Co-production, Lived Experience & Local Offer Development

Work with families and young people to shape services and the local offer.



5. EHCP Quality & Dispute Reduction

Better quality EHCPs and fewer delays, with clearer plans.



6. Workforce Development Program

Build skills and confidence across education, health and care.



7. High-cost Placement Reduction

Reduce out-of-area placements by investing early and locally.



8. Integrated Programme Governance & Commissioning

Joined-up leadership and commissioning for best outcomes and value.



These goals and workstreams will only be achieved together.

Families, children and young people, schools, health services, local services and the community – working together for a SEND system that works for everyone.



Reflections on draft SEND Reform Plan

What feels clear and meaningful to you in this draft plan?

How well do these priorities reflect what matters most to you and your child?

Where would you like to be more involved or have a stronger voice as these actions develop?

If this plan was working really well in practice, what would families notice or experience differently?

Expert at Hands Model – Proposal Southampton 360°

Support - Aims

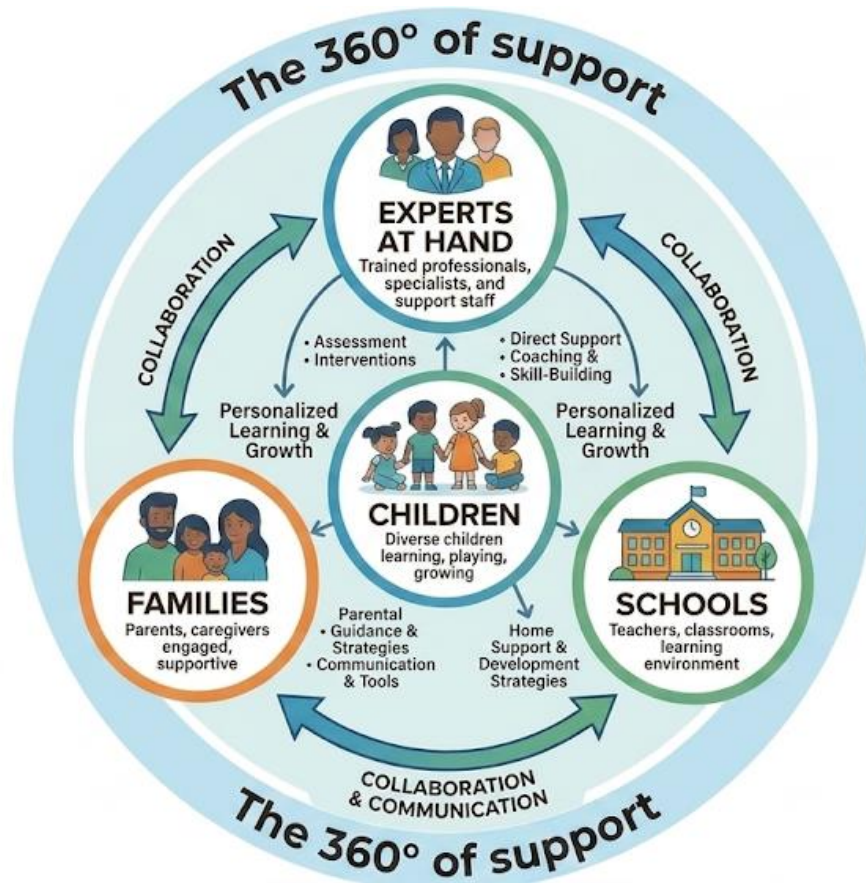
Southampton 360° Support aims to support children and young people through three main forms of delivery, all underpinned by collaborative working:

Building on capacity through expert and specialist training to education settings and wider professionals

Providing guidance through targeted expert and specialist advice and guidance to education settings and wider professionals

Expert and Specialist direct support to education settings and wider professionals to support to Children and Young People (with and without EHCPs)

Experts at Hand Proposal



EXPERTS AT HAND TEAM

A multidisciplinary team providing timely, high-quality expertise



Southampton Inclusion Partnership
Working together for inclusive practice across the city



Specialist Teacher Advisors
Expertise across SEND areas and strategies



Neurodiversity Multi Disciplinary Team
Specialist support for neurodivergent children and young people



LA Services Therapies
Access to a range of local authority therapies and interventions



NHS Services
Health expertise and specialist clinical support



Early Years SEND
Specialist support for early years settings and children



Social Care
Support for children, young people and their families



Parent Carer Forum
Lived experience shaping services and support



Educational Psychology
Advice on learning, behaviour and wellbeing

Southampton 360° Support – Delivery

There will be a range of delivery routes which will be intentionally flexible, allowing the EAH offer to respond to patterns of need at setting, cluster and citywide level, which will include:

1. Expert and Specialist Professionals Cluster-based delivery through the SEND Mainstream Funding Model

2. Termly Expert and Specialist training and professional learning delivered through SEND & Inclusion Events

3. Multi disciplinary problem-solving and joint planning on priority workstreams

4. Targeted, time-limited expert and specialist input to settings

5. Workforce development, expert supervision and specialist knowledge exchange

6. Expert Quality Assurance and Specialist Support for Specialist and Inclusion Support Bases

Southampton 360° Support – Assurance, feedback and continuous improvement

Delivery will be reviewed regularly through:

Termly operational review meetings within the Southampton 360° Support members

Quarterly strategic review meetings within the wider EAH Working Group.

Quantitative and qualitative feedback from settings, clusters and families

Quarterly reports and data on system indicators (e.g. escalation, requests, disputes) to SEND Partnership Board

What would it look like a year from now?

Imagine we are standing in June 2027, what would a successful first year of the Experts at Hand Model look like?

What has been achieved?

What have families experienced?

What have children experienced?

What has this meant for education settings?

Why did it work?